



Installation Guide

iPoint - Scheduler

PresentationPoint

Table of Contents

1	INTRODUCTION	3
1.1	PURPOSE	3
1.2	SYSTEM PREREQUISITES	3
2	INSTALLATION	4
2.1	SOFTWARE PACKAGE	4
2.2	INSTALLATION	4

1 Introduction

1.1 Purpose

The iPoint scheduler is a user interface that represents the data of the server and the activity on the player(s). It allows you to maintain player, playlist and playlist assignment information.

1.2 System prerequisites

- Windows Server 2003; Windows Server 2008; Windows Vista; Windows XP; Windows 7
- Microsoft .NET Framework 3.5 Service Pack 1

2 Installation

This topic describes how to install the iPoint scheduler software.

2.1 Software package

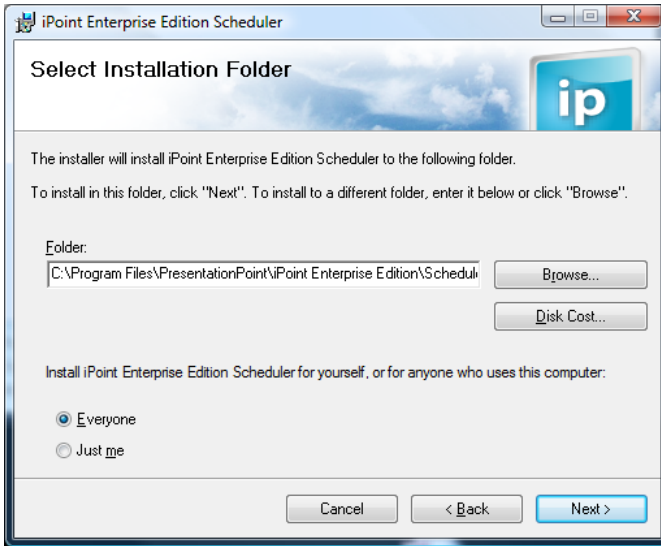
The iPoint scheduler software can be retrieved from the PresentationPoint website. Click Software > iPoint > Download from the menus. You can also get it from the PresentationPoint cdrom when ordered. There is no difference in functionality between the trial version and the full licensed version.

2.2 Installation

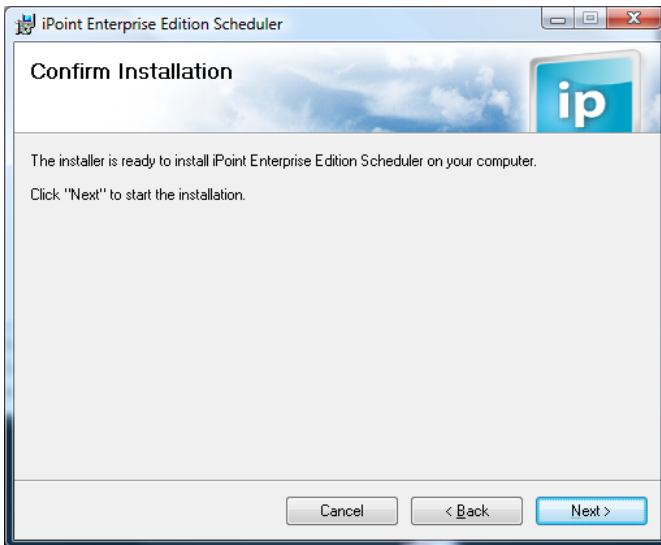
Extract the zip file and start the setup.exe program. This will launch an installer that will guide you through the installation process.



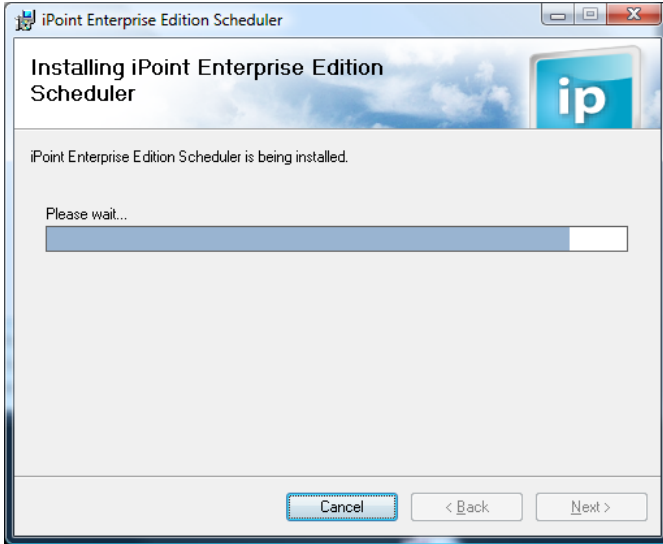
Click Next.



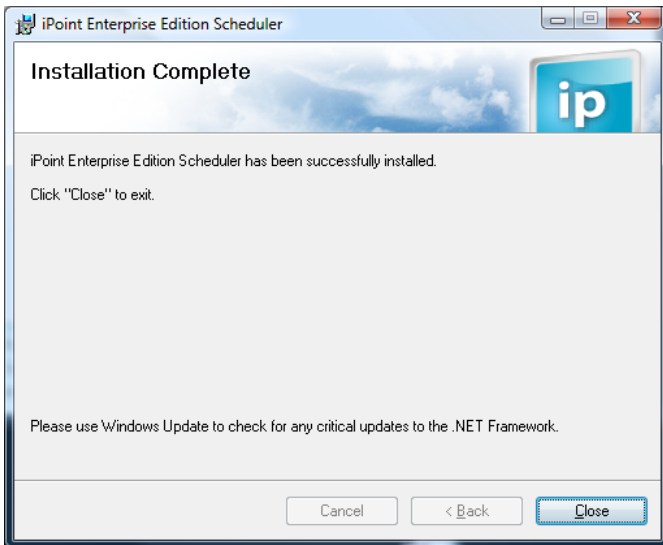
Check the default installation folder and click Next.



Click Next now to start the installation.



The installation process is now running.



Click Close to exit the installation process.